

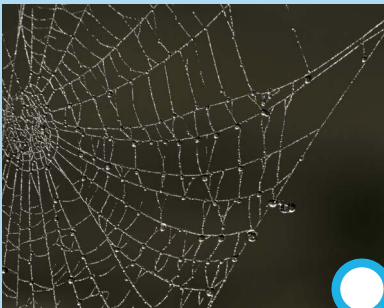
Be a

nature detective



Wild animals can often be incredibly difficult to see. They may come out at night. Or they may be so shy of us that they stay out of our sight. But we can find evidence of where they've been and what they've been doing. **Here are some of the things to look out for.**

Spider's web



Has the spider caught anything? Is the spider still in its web?

A nibbled nut



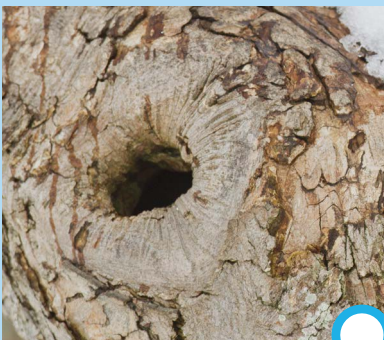
Can you see tooth marks? Were they big teeth like a squirrel's, or small teeth like a mouse's?

Old bird's nest



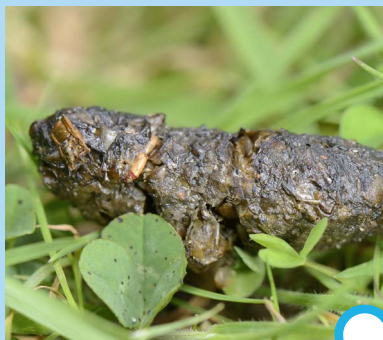
Can you see what it's made of?

Tree hole



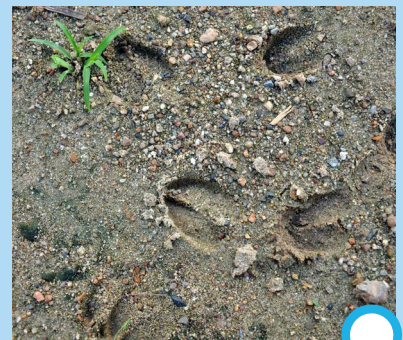
Is it round? Maybe a woodpecker's nest hole?

Poo



Is it stinky? If it smells fishy, it could be from an otter.

Deer track



Big deer or small deer? Measure how long it is.

... in autumn and winter

Can you find other signs and clues?



The nature detective's evidence sheet



Write down the **signs and clues** that will help you work out what has happened. Use a photo or drawing to show what you have seen.



Object found

Date and time

Where? (In a wood? On a path?
In the middle of a field?)

Clues at the scene

**What do you
think happened?**



Object found

Date and time

Where? (In a wood? On a path?
In the middle of a field?)

Clues at the scene

**What do you
think happened?**



Object found Deer tracks

Date and time 24th October, 10.30am

Where?

**Clues at the
scene**

you

tWhihnkat d hao ppened?

Crossing a path through King's Wood.

Used mum's car keys to help work out size of track afterwards. It's about 6cm.

Checked on British Deer Society website.

Think a fallow deer made this.

